

Malden MultiDSL A Web Control Interface

A web access option for the popular MultiDSL A speech performance test system. Now MultiDSL A can be accessed and controlled from a web browser anywhere in the corporate network and beyond.

Malden Electronics



MultiDSL A
predicts end-to-end
user experience

WHAT IS IT?

MultiDSL A is a professional test system which measures the end-to-end *user experience* of any telephone system.

MultiDSL A Web Control Interface is a major enhancement which enables remote users to share control of the MultiDSL A test system.

Any number of remote users can be added, using a flexible licensing system.

BENEFITS

MultiDSL A can be accessed and controlled remotely by authorised users—from anywhere.

A range of operating systems is supported.

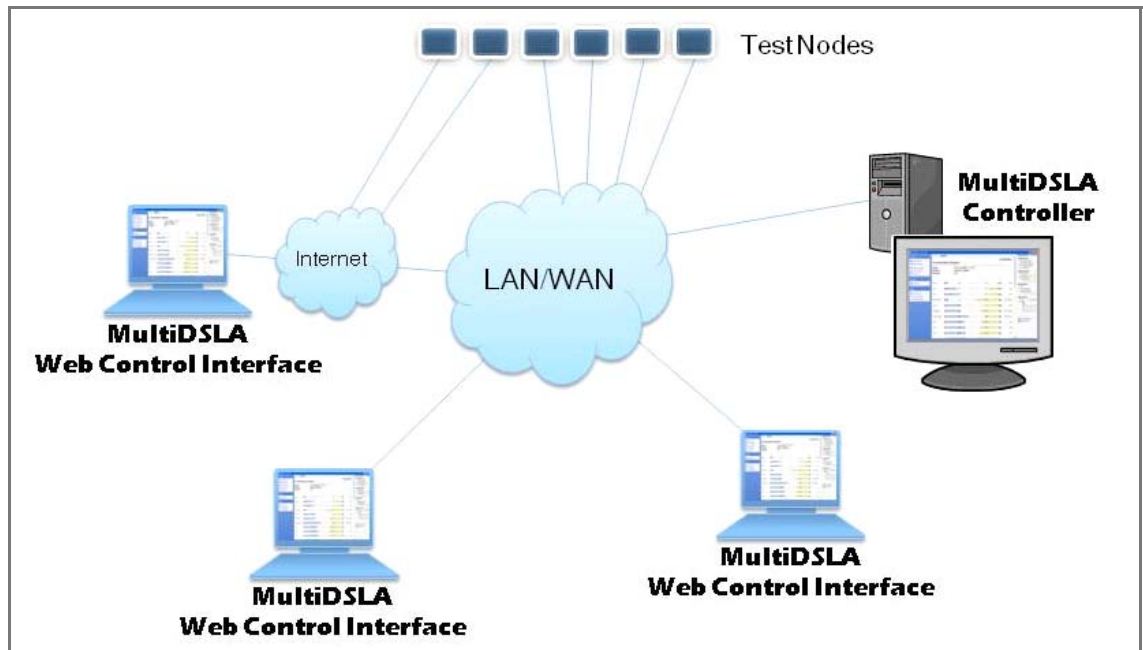
Licensing is flexible and scales to meet changing needs.

Maximises utilisation of test resources and return on investment.

Delivers significant operational flexibility to Network Operators, Service Providers, Enterprises and Network and Terminal Equipment Providers.

MultiDSL A

From the laboratory to the network, from high-level performance statistics to detailed diagnostics: MultiDSL A is the trusted solution for all speech performance requirements.



MultiDSL A Web Control Interface - Features

Node View

Node Management enables a user to view nodes and manage their configurations.

- Display Node View page
- View nodes by Group(s)
- Connect nodes for immediate test
- Connect nodes for scheduled test (opens Define Test dialogue)
- Select the test tasklist to run

Test Management

A user can view both currently running tests and completed tests.

- Display Test Manager page
- View scheduled, running and completed tests
- Stop a running test



LAB

- Interactive test creation
- Fully flexible test design
- Highest accuracy
- Extensive analysis
- Immediate feedback
- Scenario testing
- Test automation

ENTERPRISE

- Management Reports
- Unattended operation
- Small learning curve
- Alerts on problem
- Standard tests
- Affordable and scalable
- NMS integration

NETWORK

- NMS integration
- Central scheduling
- Central maintenance
- Multi-tier user support
- Quick and easy to use
- Web reports

ON THE ROAD

- GPS for location and synchronisation
- Low power requirement
- Interface to cell phones
- Support for missing control network

MANUFACTURING

- Repeatable testing
- No training to run a test
- Database of all tests
- End of day reports
- TCL/Perl/Python remote access control

Node Configuration

- Display Node Manager page
- View nodes currently in the system
- Automatically update list if nodes are added/removed
- Display the following information for a node: Name, Type, Default Configuration, Address, Serial Number, Version, Streaming State and Comment.

APPLICATIONS

MultiDSLAs are used in all branches of voice communications. These are just some application examples:

Terminal development

Network element development

VoIP, cellular, TDM, analogue: all transmission technologies

Regression testing

SIP Phone test bed

Conference bridge testing

Wireless handset comparison

UMA performance and handover analysis

Speech quality optimisation in all speech networks

Vendor selection

Enterprise SLA validation

Speech quality/load evaluation

Echo simulation and cancellation analysis

Drive test GSM

Competitive comparison of cellular networks or terminals

Drive test PMR/Tetra

Train communications

Codec evaluation

DSP performance measurement

- Select a node and view its Configurations
- Display Configuration Editor page
- Change one or more properties of a configuration (with appropriate user privilege)
- Commit changes to configuration (with appropriate user privilege)
- Cancel changes to configuration (with appropriate user privilege)

Report Generation

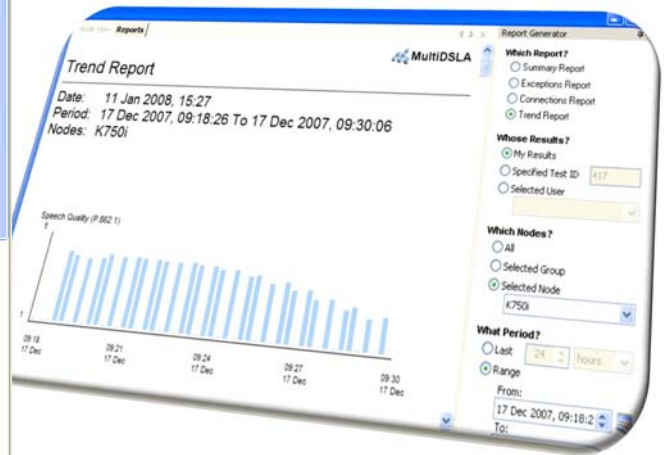
- Select report types; Summary, Exception, Connections or Trend
- Select whose results; My Results, Specified Test ID, or Selected User
- Select which nodes; All, by Group, by Node
- Select period; Last x minutes/hours/days/weeks, or Range

Results Analysis

Result Analysis displays detailed measurement and analysis data for diagnostics purposes. The user may drill down to a single set of measurements from the report, and then download the corresponding RST file (composite numerical and graphical analysis). The RST file is viewed in the Malden Speech Performance Viewer (SPV). SPV is included in the MultiDSLAs Utilities folder and is available to download at:

<http://www.malden.co.uk/spv.htm>

Please refer to the Malden MultiDSLAs brochure for full product details.



System Requirements

MultiDSLAs Web Control Interface functions with the following Internet browsers:

- Microsoft Internet Explorer 7
- Mozilla Firefox 2
- Apple Safari 3 (not SPV)

One MultiDSLAs Controller application is required per system. Although many user accounts can be created, a Client Access Licence (CAL) system controls the number of concurrent MultiDSLAs Web Control Interface instances. A user-definable inactive session timeout ensures efficient use of the licences.

**Malden
Electronics**